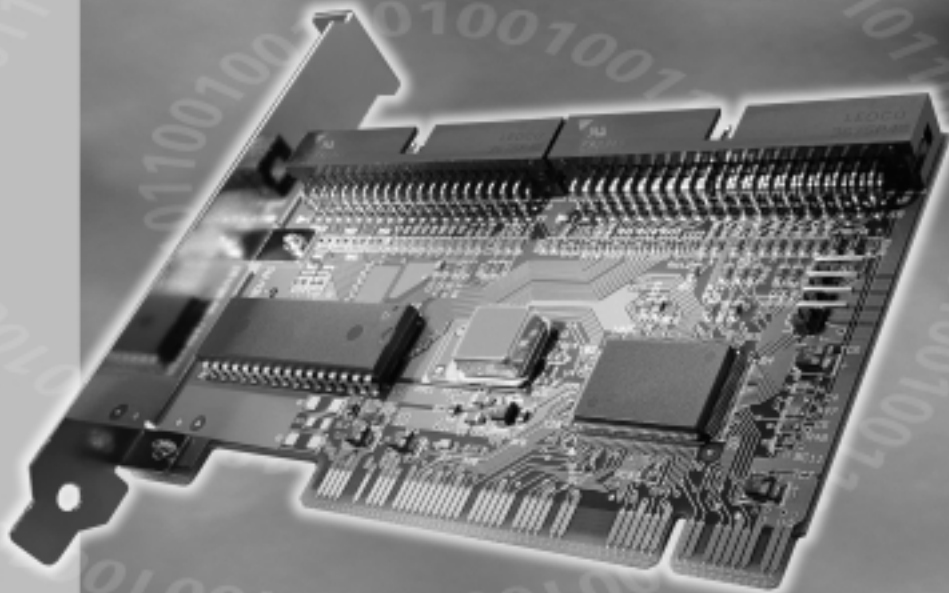


**Maxtor**<sup>®</sup>

*Ultra ATA/100 PCI Adapter Card*



# INSTALLATION GUIDE

# 1 PRE INSTALLATION

### Thank You

Thank you for selecting Maxtor's Ultra ATA/100 PCI Adapter Card.

Please follow these installation instructions to reap the full benefits of your purchase.

### Handling Precautions

If these handling precautions are not followed, damage to the adapter card may result – which may void your product warranty.

Please see the Warranty section for additional information.



Adapter cards are sensitive to electrostatic discharge (ESD) damage. Handle the Ultra ATA/100 Adapter Card by its sides. **DO NOT** touch the printed circuit board assembly.



**DON'T** connect/disconnect any cables when the system power is on.

**DON'T** force or rock the Adapter Card connectors into or out of their connection sockets.

# 1 PRE INSTALLATION CONT.

## System Requirements

- Pentium-class or higher with available PCI Bus Mastering expansion slot. (See system or mother board guide for additional information.)

## Operating System Requirements

- Windows NT 4.x (SP4) or higher
- Windows 98/Millennium
- Windows 2000

## Tools Required for Installation

- A small (#2) Phillips screw driver
- Your computer user's manual
- Operating system software

## Important – Please Read

- Maxtor recommends that you **make a backup copy of the files on any existing hard drives** prior to installing the new adapter card. Refer to your computer user's manual for detailed data backup instructions.
- For your records, document your system's current BIOS (system setup) settings prior to installing the adapter card. Some system BIOS may need to be set for "add-on IDE adapter."
- Uninstall any hard drive installation software (e.g., MaxBlast™, EZ-Drive or Ontrack) that may reside on existing hard drives.

Failure to do so may result in loss of data.

Reference the following URL if the existing hard drive is from Maxtor: <http://www.maxtor.com/satisfaction/index.html>.

Click on the Ultra ATA/100 Adapter link for details.

# 1 PRE INSTALLATION CONT.

**WARNING:** Removing the installation software of hard drives other than Maxtor will result in data loss. Please contact other hard drive manufacturers for their specific third party software removal procedures.

Fujitsu	<a href="http://www.fujitsu.com">http://www.fujitsu.com</a>
Quantum	<a href="http://www.quantum.com">http://www.quantum.com</a>
Seagate	<a href="http://www.seagate.com">http://www.seagate.com</a>
Western Digital	<a href="http://www.wdc.com">http://www.wdc.com</a>

## **ATAPI Devices (DVD ROM, Tape Backup)**

If your ATAPI device is not UDMA 66 or 100 compliant, and is currently working fine, please leave it on that channel. If you experience problems when attaching a ATAPI device and the device is not seen by its installation software, please call that device manufacture for new software.

**NOTE:** If you're installing this card in conjunction with a new Maxtor hard drive, please physically install both devices (Ultra ATA/100 PCI Adapter Card and hard drive) before using MaxBlast software.

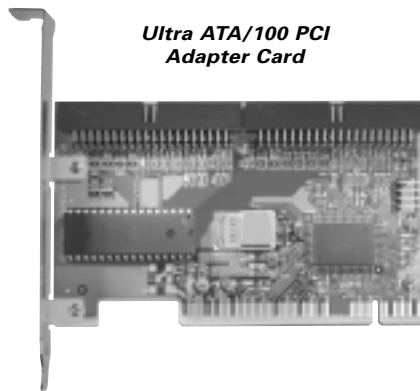
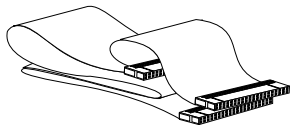
Refer to the DiamondMax<sup>®</sup> Hard Drive Installation Guide for specific instructions and drive jumper configurations.

## 2 KIT COMPONENTS

The Maxtor Ultra ATA/100 PCI Adapter Card Kit includes the components shown here.

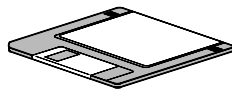
Familiarize yourself with each of these items. Depending on your particular computer setup, some or all of these parts may be needed to complete the Adapter Card installation.

***UDMA IDE Interface Cable***  
*(necessary for UDMA 66/100 devices)*



***Ultra ATA/100 PCI  
Adapter Card***

***Diskette (Ultra ATA/100 Drivers)***



BACK

FORWARD

### 3 HARDWARE INSTALLATION

#### Adapter Card Installation

Installing the Ultra ATA/100 PCI Adapter Card in a system is a simple process. The card fits into any available 32-bit PCI expansion slot on the system's motherboard.

1. To prevent ESD damage, make sure you are properly grounded before handling the Ultra ATA/100 PCI Adapter Card and any other system components.
2. Remove the cover of your system.
3. Remove the inside slot cover of an available 32-bit PCI slot on the motherboard.

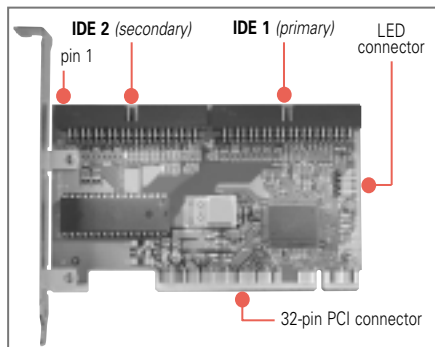
4. Install the Ultra ATA/100 PCI Adapter Card into the open slot (Figure 1).



**Figure 1**  
*Installing the Adapter Card into a PCI Slot*

## Adapter Card Installation (cont.)

5. If applicable, attach the LED cable connector on your system case to the LED connector on the Ultra ATA/100 PCI Adapter Card (Figure 2).



**Figure 2**  
*Adapter Card Connections*

6. Fasten the adapter card bracket to the system case.

## Hard Drive Installation

**NOTE:** If you're installing the Ultra ATA/100 PCI Adapter Card into a system with an existing Windows NT operating system, do not connect any hard drives to the Ultra ATA/100 PCI Adapter Card before installing the driver software.

Some OEM systems require a BIOS change for SCSI add-in cards.

Drives attached to the Ultra ATA/100 PCI Adapter Card cannot boot Windows NT without driver support. See Software Installation, Option C, Step 1C for details.

1. Configure the jumpers of the hard drive(s) you're preparing to install with the Ultra ATA/100 PCI Adapter Card with the appropriate master/slave settings.

You may need to refer to your hard drive's manual for more information.

**NOTE:** Do not apply any jumper that is meant to reduce the capacity of the hard drive.

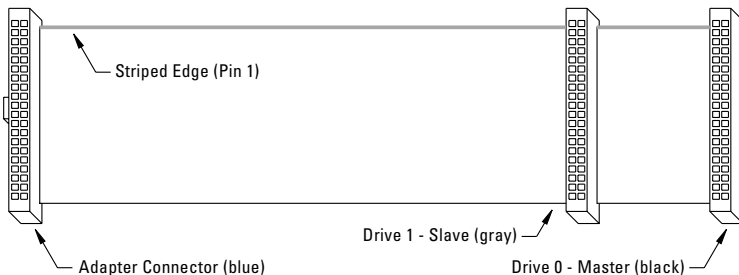
### Hard Drive Installation (cont.)

2. Install the hard drives in the proper hard drive bays of your system.
3. Attach the UDMA IDE cable to the hard drives and to the IDE connectors on the Ultra ATA/100 PCI Adapter Card.

If you're installing the adapter on a system with Windows NT already installed, see the NOTE above for more information.

The colored edge of the cable indicates pin 1 (Figure 3). The blue cable connector must be attached to IDE 1 on the Ultra ATA/100 PCI Adapter Card.

4. If two drives are connected via the same cable, make sure that one drive is configured as a master drive and connected to the back connector of the UDMA interface cable.



**Figure 3**  
UDMA Interface Cable  
(industry standard cable length - 18 inches)



### Hard Drive Installation (cont.)

You must use the UDMA IDE interface cable when connecting Ultra ATA/100 hard drives to the Ultra ATA/100 PCI Adapter Card.

The Ultra ATA/100 PCI Adapter Card package contains one UDMA interface cable.

You will need an additional UDMA interface cable if connecting more than two Ultra ATA/100 hard drives to the Ultra ATA/100 PCI Adapter Card.

***Helpful Hint:** If upon booting, your system doesn't recognize the card, change the card to a different PCI slot.*



# 4 SOFTWARE INSTALLATION

This section details software driver installation of the Ultra ATA/100 PCI Adapter Card when used with various operating systems.

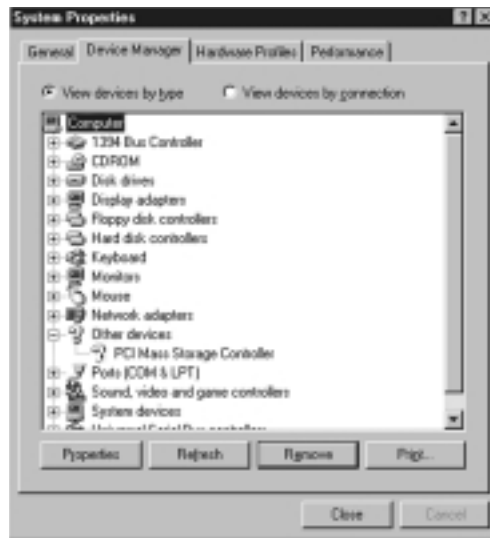
Software drivers are small program files that enable recognition/communication between devices (e.g., the Ultra ATA/100 PCI Adapter Card) and an operating system.

This section contains four different options for installing the Ultra ATA/100 Drivers:

- **Option A:** Installing Drivers with a New Windows 98/Millennium Installation
- **Option B:** Installing Drivers with Pre-Existing Windows 98/Millennium Installation
- **Option C:** Installing Drivers during Windows NT 4.x/2000 Fresh Installation
- **Option D:** Installing Drivers with a Pre-Existing Windows NT 4.x/2000 Installation

### Option A: Installing Drivers with a New Windows 98/Millennium Installation

1. After installing the Ultra ATA/100 PCI Adapter Card and configuring the hard drive(s), partition and format your hard drive(s).
2. Install Windows 9x.
3. After installation, go to the “Start” menu and select “Settings.”
4. From the “Settings” menu, select “Control Panel.”
5. In the “Control Panel” window, double-click on the “System” icon.



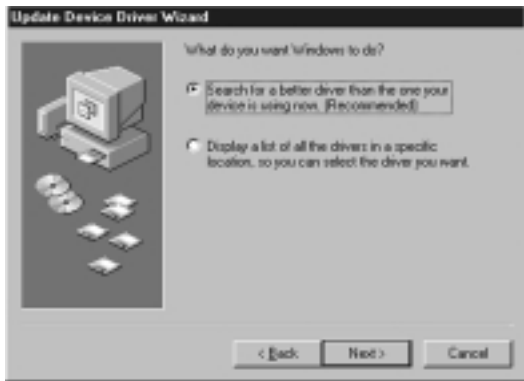
### Option A: Installing Drivers with a New Windows 98/Millennium Installation (cont.)

6. In the “System” window, select “Device Manager.”
7. In the hierarchical display under “Other Devices” is a listing for “PCI Mass Storage Adapter.” Select it and then press the “Properties” button.
8. Select the “Driver” tab in the “Properties” window, choose “Update Driver” and then press “Next.”



## Option A: Installing Drivers with a New Windows 98/Millennium Installation (cont.)

9. Select “Search for a better driver than the one your device is using now (recommended),” and press “Next.”

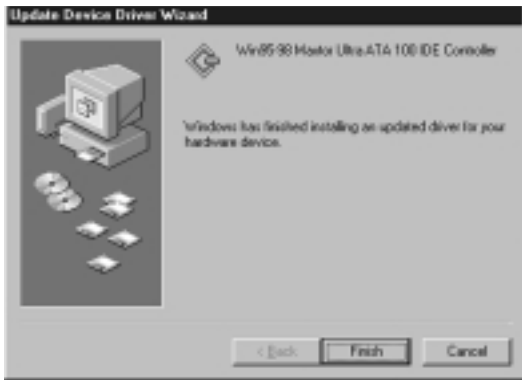


10. Select “Specify Location” and then type “A:\” in the text box.



### Option A: Installing Drivers with a New Windows 98/Millennium Installation (cont.)

11. Insert the “Ultra ATA/100 Drivers” diskette into the A: diskette drive.
12. Press the “Next” button. A message informing you that Windows has found “Maxtor Ultra ATA/100 Adapter” should appear.
13. Press “Next”, then “Finish,” then “Yes” when asked if you want to restart your computer. Be sure to remove the diskette from drive A:.



## **Option B: Installing Drivers with Pre-Existing Windows 98/ Millennium Installation**

1. After installing the Ultra ATA/100 PCI Adapter Card and configuring the hard drives, power up the system and boot Windows.
2. The “Add New Hardware Wizard” will appear, informing you that it has found a “PCI Adapter.”

Refer to steps 3 through 9 of Option A for remaining driver installation instructions.

### **Driver Confirmation**

To confirm that the driver has been properly loaded, choose “Settings” from the “Start” menu. Select “Control Panel,” and then double-click on the “System” icon.

Choose the “Device Manager” tab, and then click the “+” in front of “SCSI adapters.” “Maxtor Ultra ATA/100 Adapter” should appear.

## **Option C: Installing Drivers during Windows NT 4.x/2000 Fresh Installation**

1. Start the system installation by booting from the Windows NT Disk #1:
  - a). **Floppy Install:** boot the system with the Windows NT installation disks.
  - b). **Floppy-less Install:** boot from floppy and type "WINNT/B". After the files have been copied, the system will reboot.
  - c). **CD-ROM Disk Install:** boot from the CD-ROM disk and press the "F6" key (several times) when the message "Setup is inspecting your computer's configuration" appears.
2. Press "S" to configure an additional adapter.
3. Insert the Maxtor Ultra ATA/100 Driver diskette into drive A: and press "Enter."

On the reboot, press the "F6" key when the message "Setup is inspecting your computer's hardware configuration" appears.

Then simply follow the screen prompts.





## **Option D: Installing Drivers with a Pre-Existing Windows NT 4.0/2000**

Hard drives should not be connected to the Ultra ATA/100 Adapter Card before performing the following procedure.

The Ultra ATA/100 Drivers must be loaded on the system hard drive (running under the existing hard drive adapter) before any hard drives are connected to the Ultra ATA/100 PCI Adapter Card.

**NOTE:** Please refer to screen capture pictures listed in Steps 7, 8, 9 and 11 of Option A - as they also apply for the steps outlined here in Option D.

1. Select “Settings” from “Start” menu.
2. Select “Control Panel” from the “Settings” menu.
3. Double-click on the “SCSI Adapters” icon, which generates the “SCSI Adapters” dialog box.
4. Choose “Drivers,” and press “Add.”

5. In the “Install Drivers” dialog box, press “Have Disk.”
6. When “Install From Disk” appears, insert the “Ultra ATA/100 Driver” diskette in drive A:, and select “OK.”
7. When the “Install Driver” dialog box appears, select “Maxtor Ultra ATA/100 Adapter” and press “OK.”
8. When the “Select SCSI Adapter Option” box appears, press “Install.”
9. After a successful installation, the SCSI Adapter Setup box will show that the Maxtor Ultra ATA/100 Adapter driver was installed.

Power off your system and attach the hard drive(s) to the Ultra ATA/100 PCI Adapter Card.

# 5

## PRODUCT REGISTRATION

### **Register and take advantage of all the benefits!**

By registering your new Maxtor product, you'll have the option to receive product updates, special offers, and other important information about other storage solutions from Maxtor.

Simply point your web browser to: [www.maxtor.com](http://www.maxtor.com) go to the warranty registration page, and complete the short questionnaire.



## PRODUCT WARRANTY

Maxtor's warranty obligations are limited to the terms set forth: Maxtor warrants only to the original consumer purchaser that new Maxtor Ultra ATA/100 PCI Adapter Card products will be free from defects in material and workmanship for 1 year from the date of original purchase.

For a replacement Ultra ATA/100 PCI Adapter Card, the warranty on the replacement card is the remainder of the warranty on the original card or 90 days, whichever is longer. If you discover a defect, Maxtor will replace the Card at no charge to you, provided you return it during the warranty period, with transportation charges prepaid, to Maxtor in Ireland, Singapore or the USA.

Ultra ATA/100 PCI Adapter Cards must be properly packaged in Maxtor packaging or Maxtor approved packaging to obtain warranty service. Before returning a Maxtor Adapter, please contact Maxtor at 1-800-2MAXTOR (in USA) to obtain a Return Material Authorization (RMA) number. A copy of the receipt or a bill of sale bearing the appropriate Maxtor serial number and model number may be required for warranty service. The warranty applies only to the Maxtor Ultra ATA/100 PCI Adapter Cards that can be identified by the Maxtor trademark, trade name, serial number or logo affixed to them. Maxtor does not warrant any Card that is not manufactured by, for or with permission from Maxtor.

This warranty is not applicable to: Abnormal wear and tear; Abuse, unreasonable use, mistreatment, or neglect; Damage caused during installation of the Card; Damage caused by the equipment or system with which the Card is used; Damage caused by modification or repair not made or authorized by Maxtor; Cards whose Maxtor Serial Number has been removed or defaced; Damage caused by use of non-Maxtor packaging; Damage caused by improper or improperly used packaging; Damage caused by lack of ESD protection; Cards that are determined to be stolen.

THIS WARRANTY AND REMEDIES SET FORTH ABOVE ARE EXCLUSIVE AND IN LIEU OF ALL OTHERS, WHETHER ORAL OR WRITTEN, EXPRESSED OR IMPLIED. MAXTOR SPECIFICALLY DISCLAIMS ANY AND ALL IMPLIED WARRANTIES, INCLUDING, WITHOUT LIMITATION, WARRANTIES OF MERCHANTABILITY AND FITNESS FOR A PARTICULAR PURPOSE AND AGAINST INFRINGEMENT. No Maxtor dealer, agent or employee is authorized to make any modification, extension or addition to this warranty.

MAXTOR IS NOT RESPONSIBLE FOR SPECIAL, INCIDENTAL, INDIRECT OR CONSEQUENTIAL DAMAGES RESULTING FROM ANY BREACH OF WARRANTY, OR UNDER ANY OTHER LEGAL THEORY, INCLUDING BUT NOT LIMITED TO LOSS OF DATA, LOSS PROFITS, DOWNTIME, GOODWILL, DAMAGE OR REPLACEMENT OF EQUIPMENT AND PROPERTY, AND ANY COSTS OF RECOVERING, PROGRAMMING OR REPRODUCING ANY PROGRAM OR DATA STORED IN OR USED WITH MAXTOR DISK DRIVES OR MAXTOR'S ULTRA ATA/100 PCI ADAPTER CARDS.

Some states/jurisdictions do not allow the exclusion or limitation of incidental or consequential damages or exclusions of implied warranties, so the above limitations or exclusions may not apply to you. This warranty gives you specific legal rights, and you may also have other rights that vary from jurisdiction to jurisdiction.



## CONTACTING MAXTOR

### **1-800-2MAXTOR (1-800-262-9867)**

Product Support and Customer Service Agents are available from 6 a.m. to 6 p.m. (MST) Monday - Friday.

### **Maxtor on the Internet**

#### **Homepage**

<http://www.maxtor.com>

#### **FTP Site**

<ftp://ftp.maxtor.com>

### **Maxtor via E-mail**

#### **Customer Service E-mail**

[www.maxtor.com](http://www.maxtor.com)

### **Maxtor Outside the U.S. and Canada**

#### **Customer Support**

303-678-2015

#### **MaxInfo**

303-678-2015, press 1

#### **MaxFax®**

303-678-2618

All material contained herein Copyright © 2000 Maxtor Corporation. MaxFax and Maxtor are registered trademarks of Maxtor. Other trademarks are the property of their respective holders. Contents subject to change without notice.

Printed in the U.S.A. **Maxtor Part #20130600-WEB**